



MALTBYLEARNINGTRUST
Exceptional Experiences. Successful Lives.



WELCOME TO NURSERY

2023-24



Maltby
Lilly Hall Academy

WELCOME TO NURSERY BUMBLEBEES CLASS AT MALTBY LILLY HALL ACADEMY

We are looking forward to you starting school on the week commencing 4th September. Please check your emails for start dates and times.



Mrs Gibson
Nursery Teacher



Miss White
Cover Supervisor




Miss Small
Teaching Assistant



YOUR NURSERY SCHOOL DAY

School start and finish times are...




All-Day:
8:30am-3:30pm

AM Session:
8:30am-11:30am

PM Session:
12:30pm-3:30pm

If you are an **all-day** child, dinner time is **11.30am until 12.30pm**.
You will need to bring a **packed lunch** to school every day.

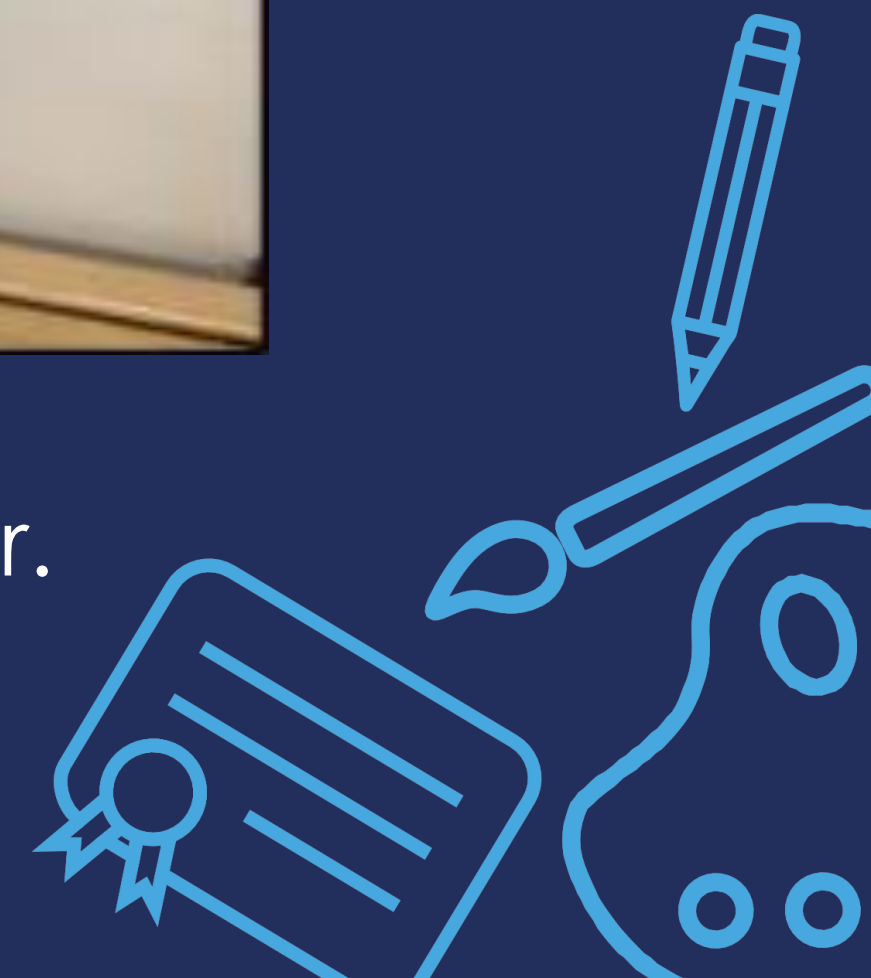


REGISTRATION

When you arrive at school, you will have your own peg to hang your coat on.



You will find your photo and name in class. We will then do the register.



OUR NURSERY CLASSROOM

We have lots of exciting, fun areas of provision and learning waiting for you!



BOOKS TO TAKE HOME

We have a lending library at our entrance. You will be able to choose a book with your adult and take one home in your book bag to enjoy. Remember to bring it back when you have finished, so that you can take a new one home.



We also have 'Book Challenge Books'. These will be changed weekly. Remind your grown up to write in your diary so we know you have read it!



WHAT YOU WILL NEED

Water bottle



Book bag
(to be brought daily)



Wellies
(to stay in school)



Change of clothing
(to stay in school on your peg)



Sun hat or coat (weather dependent)



Please ensure that all belongings have your child's full name clearly written in them.



SNACK AND BAKING

You will wash your hands and choose your free healthy snack and a carton of milk every day.



Every half term, you will be one of the '**Class Bakers**' and make something for the whole class to enjoy.



BUMBLEBEES NURSERY CLASS

We know that you will be feeling very excited and maybe a little bit nervous. We will make sure that you are settled, looked after and cared for. We are going to have a fantastic year together!



Have a wonderful summer and we will see you soon!



SCHOOL UNIFORM

- Royal blue jumper/sweatshirt/cardigan (with or without school logo)
- Plain white shirt/blouse/polo shirt
- Dark grey or black trousers/skirts/shorts/tights
- White, black or grey socks
- Black school shoes

PINDERS UNIFORM

Outdoor area/Nature Explorers: Children will need a pair of wellies which can be left in school.

Please ensure that all items of clothing have your child's full name clearly written in them.

If you have any further questions, please contact the school via the school email info@maltbylillyhallacademy.com

